



OTRCH
COMMUNITY HOUSING
Housing First. Community Always.

Over-the-Rhine
Community Housing
2017 Annual Report

TABLE OF CONTENTS

OTRCH's New Look
About Over-the-Rhine
Community Housing
What Does Affordable
Housing Mean? **3**

91 New or Improved
Units of Affordable Housing
Coming Soon
New Projects in 2018 **4**

Asset Management Update **6**

An Afterglow of Smiles:
Preventing Displacement,
Building Community
Supporting Residents 24/7 **7**

Hope and Pride in
Over-the-Rhine
Providing Resident Services
at Cutter Apartments **8**

Resident Services
Activities in 2017 **9**

2017 Financial Summary **10**

"A Walking, Talking Miracle":
Dionna's Story
Permanent Supportive
Housing Update **12**

Staff and Board **13**

Thank You, Friends
and Supporters **14**

Dear Friends of Over-the-Rhine Community Housing,

2017 was a year of thanksgiving. We celebrated 40-years of creating affordable housing and building inclusive community. But displacement is taking a toll all around this country. We witness it here in Over-the-Rhine and other Cincinnati neighborhoods. It makes us grow an even deeper appreciation for the necessity of our work, for the foresight of our founders, and for your support that makes our work possible. Thank you.

In this annual report we are introducing our new logo and new tagline: "Housing First, Community Always." This statement captures our essence. The community-based nature of our work keeps us grounded and close to the people we serve. This connection helps us see the value of each person and the value of community. We've always understood that with community control of housing our people who need affordable housing have a chance to still live here and call Over-the-Rhine home. *Housing First. Community Always.*

Our work is about providing homes for our neighbors who experience homelessness. For our neighbors

who work steady, but don't earn an income sufficient to pay market rents. For seniors who work hard but now are on fixed incomes. For families who live on a squeezed budget. For singles who earn only a minimum wage. We believe all of our residents have a great deal to offer our community. We give thanks everyday for their many contributions.

In this report we share some stories that bring to life "Community Always." Community means supporting each other as we move through challenging days, as we take on new experiences, and as we celebrate accomplishments.

We also want to recognize the work of our skilled and compassionate staff. Each applies their gifts to the challenge of nonprofit community-based development work. Residents who make a way out of no way inspire our staff. We do the same. This is the beauty of community work: the impossible becomes possible through supportive relationships.

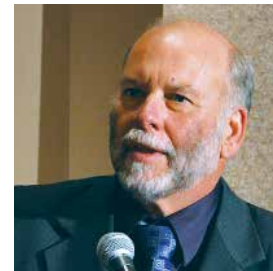
We will continue to advocate that our City not lose sight of the importance of community control of an affordable housing stock. Without it, our neighborhood will not be racially and economically diverse. Our residents want to still be here.

Housing First, Community Always.

With all of us working together as community, our vision of an equitable neighborhood and world has a chance to become real. Thanks again for your support.

ROGER G. AUER

President, OTRCH Board of Trustees



MARY BURKE RIVERS

Executive Director



"There are programs that can create dependence on systems (for numbers of reasons), but you've built support systems creating interdependence within community. Within neighbors."
-Clare Blankemeyer, Mayerson Foundation

OTRCH's New Look

Over-the-Rhine Community Housing was honored to participate in the 2017 LPK Design Blitz! A team of LPK's design experts took a dive into OTRCH's day-to-day operations and quickly came to embrace our mission. At the end of this 24-hour "blitz," they helped us tackle our communication challenges by creating an approachable brand identity and meaningful narrative for OTRCH. We're excited to introduce this new look that brings to life our core value of housing as a human right!



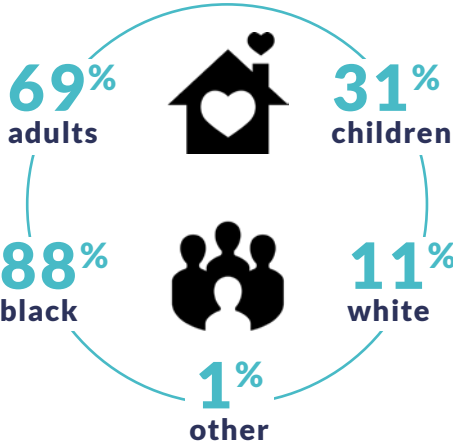
Thank you, LPK, for helping us tell our story and giving our organization a fresh, modern brand identity!



About Over-the-Rhine Community Housing

The OTR we know and love today was built on a foundation of inclusivity and hard work—but it wasn't built overnight, and we should know. OTRCH has been here for 40 years, providing the Property Development, Property Management, Resident Services and Tenant Advocacy that enable the thriving, vibrant, diverse community that we are all a part of today.

Throughout the neighborhood's transformations, we have worked to turn abandoned buildings in to affordable homes and strangers into neighbors. We are all OTR, and we are here to stay.



What Does Affordable Housing Mean?

A way to bring meaning to "affordability" is the HUD standard that housing should not cost more than 30% of household income. This is true whether renting or buying. Let's look at some examples.

A 2- person household earning \$29,900 annually (40 hours/week at \$14.38/hr) has a difficult time finding quality housing they can afford. An affordable housing cost for that household would be \$747.50 per month, including utilities. This example shows that a person with one child and a decent job needs access to decent housing where the rent is roughly \$600 per month.

A Hospital Food Service worker makes an average of \$26,000 annually (\$12.50/hour). That person could afford \$650 per month for housing costs, including utilities.

According to Rent Jungle as of January 2018, average rent for an apartment in Cincinnati, OH is \$1,025 which is a 1.66% increase from 2017 when the average rent was \$1,008. The average monthly rent for 1-bedroom apartments in Cincinnati is \$904 (a 2.65% increase from 2017) and 2-bedroom apartment rents average \$1,122 (a 1.16% increase from 2017). Affordable housing must be prioritized to ensure that OTR remains equitable.

We provided affordable housing for 1,042 residents in 2017.

628 individuals resided in our **410** affordable apartments in OTR
233 individuals resided in site-based permanent supportive housing at Anna Louise Inn, buddy's place, Jimmy Heath House, Recovery Hotel, and East Clifton Homes
181 individuals resided in scattered-site permanent supportive housing across Hamilton County & receive supportive services from OTRCH Case Managers



91 New or Improved Units of Affordable Housing Coming Soon

MORGAN APARTMENTS

Partnership between OTRCH and
The Model Group

Construction Started: October 2017

Estimated Construction Completion:
December 2018

Units: 48 units
(14 new units and 34 existing units)

Estimated Total Project Cost:
\$11.5 million

Funders: *Ohio Housing Finance Agency, Ohio Capital Corporation for Housing, KeyBank National Association, the City of Cincinnati, Ohio Development Services Agency (federal and state historic tax credits), Local Initiatives Support Cooperation (LISC), Cincinnati Development Fund, 3CDC.*

Importance to the Neighborhood:

All units were at risk of losing their rental subsidy due to deferred maintenance and the potential sale of the properties for market rate development. This project preserves the subsidy at 34 of the units and reapplies the subsidy to 14 new units.

CARRIE'S PLACE

Construction Started: August 2017

Estimated Construction Completion:
Phase 1 – June 2018,
Phase 2 – April 2019

Units: 43 units
(7 new units and 36 existing units)

Estimated Total Project Cost:
\$9.05 million

Funders: *Ohio Housing Finance Agency, Ohio Capital Corporation for Housing, RiverHills Bank, the City of Cincinnati, Ohio Development Services Agency (federal historic tax credits), Local Initiatives Support Cooperation (LISC), 3CDC.*

Importance to Neighborhood:

The project will preserve 11 units and create 10 new units of permanent supportive housing for the formerly homeless. Additionally, it will preserve 25 units of project-based rental subsidy within Over-the-Rhine that were threatened due to deferred maintenance and the sale of the property for market rate development.



Stay tuned for "After" photos once Morgan Apartments and Carrie's Place are complete!

New Projects in 2018!

821 FLATS (Partnership between
Tender Mercies, Inc. and OTRCH)

Estimated Construction Start:

Early Summer 2018

Estimated Construction Completion:

Early Summer 2019

Units: 57 units of permanent
supportive housing for homeless
individuals with mental illness

Estimated Total Project Cost:
\$10.5 million

Funders: *Ohio Housing Finance Agency, Ohio Capital Corporation for Housing, RiverHills Bank, the City of Cincinnati, Hamilton County, Federal Home Loan Bank of Cincinnati, Cincinnati Metropolitan Housing Authority, Cincinnati Development Fund*

Importance to the Neighborhood:

The demand for housing for individuals coming out of homelessness significantly outnumbers the supply in Cincinnati. Currently, there are over 250 individuals who are waiting for a permanent supportive housing unit to become available. These units will help move some of these individuals off the list, out of homelessness, and into a home. Additionally, the newly constructed building will turn a vacant property into an asset for the West End neighborhood.





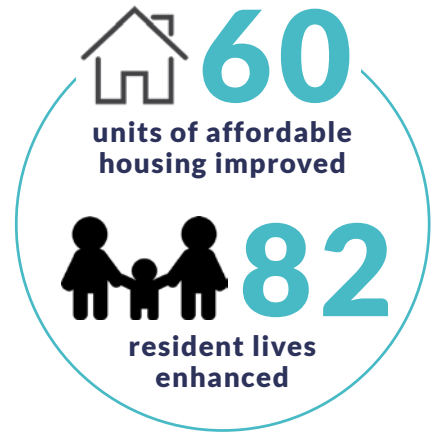
**NEIGHBORHOOD PARTNER
OF THE YEAR AWARD**



Tender Mercies presented the “Neighborhood Partner of the Year” award to OTRCH for our work as co-developer on the 821 Flats project. Tender Mercies is rooted in the same justice seeking activism that created OTRCH so it is especially rewarding to join forces with them to develop deeply needed affordable housing with dignity, security, and community.

**ASSET MANAGEMENT
UPDATE**

We believe that all people deserve dignified housing. One of the ways we act on this belief is by maintaining our buildings to ensure safe, high quality, affordable housing for low-income residents. Improvements made in 2017 include lead-based paint remediation, roof, plumbing, patio, gate repairs, and more.



We’re grateful to PNC Bank, Bank of America, and Empower for making these repairs possible! A special thank you goes to KeyBank and the City of Cincinnati, who dedicated a combined total of \$800,000 over the next 3 years to support affordable housing preservation.



This support goes beyond enhancing our units and buildings. It enables OTRCH to maintain rents at a level that our residents can afford, despite the rapidly rising costs of the neighborhood.



Our Mission

We develop and manage resident-centered affordable housing to build inclusive community and benefit low-income residents.

Our Vision

Quality stable housing for all in a socially, racially and economically inclusive community

Our Values

- Housing is a right and should be available to all.
- All people deserve dignified housing.
- Housing must include the most vulnerable members of our community.
- All relationships must be shaped by justice, community and inclusion.
- Neighborhood amenities and services are available for all members of our diverse community.
- All persons are respected and valued.

"CAROL CARED DEEPLY

for the people of her community; always asking me to pray for someone she had heard was struggling. It was also important to Carol that she have a way to give back to the community that gave to her. From serving Communion in our worship services, to dishing up the desserts at our community meal. Carol became part of the fabric that makes OTR such a great community."

-Pastor Brian Ferguson, First Lutheran Church

An Afterglow of Smiles: Preventing Displacement, Building Community

"I'd like to leave an afterglow of smiles when life is done." This poem by Helen Marshall graced Carol Donohew's funeral program in December 2017 and describes exactly how Carol is remembered. She was adored for her unique quirks and rough exterior that encased a kind and caring heart. Her story might not make headlines, but Carol is an unforgettable character who made many important contributions to this community. For decades, Over-the-Rhine was Carol's world.

Carol had lived in her apartment at 13th and Vine since 1976. 15 years ago, the building was purchased and converted to condos. The previous owner put Carol's things in storage and she was displaced, left to find housing.

Everything Carol accessed was from the hub of 13th and Vine. She was a low-income resident, had no connections outside of this neighborhood and being pushed out of OTR would have exacerbated her instability. With her world turned upside down, Carol was understandably not trusting of new folks. Eventually Carol came to trust Over-the-Rhine

Community Housing and she moved in with us on West 14th St.

Since then a community continued to grow around Carol. She was a loyal member of the Prince of Peace Church where she volunteered. She was also a member of the First Lutheran Church community and volunteered at City Gospel Mission.

People like Carol aren't typically included in community development efforts in transitioning neighborhoods. Think of how many people get displaced and lose the opportunity to share their gifts with the community they called home.

Were it not for OTRCH, Carol would have been lost in the revitalization shuffle years ago. But instead, Carol lived a full life in her final years. She had friends, a cat named Pickles, a community of care that she relied on and a community that relied on her. We miss Carol, but her legacy lives on in Over-the-Rhine.

"I first met Carol six years ago when we both served at Prince of Peace Lutheran Church on Race Street. We serve donuts, coffee and a free lunch three days a week, accompanied by bible study, a little kindness, and some compassion to those in need. Carol started out as one of our regular "peeps" who came in to BE served. Within months she wanted TO serve!"

-Lisa Burns, Prince of Peace



Supporting Residents 24/7

"It might be our property, but it's their home," says Carl Combs, OTRCH's Director of Maintenance. Our dedicated maintenance team



is on call 24/7 to ensure our units remain in high quality condition. "It's more than just fixing stuff," says Carl. Maintenance also plays a critical role in helping residents achieve stability in their housing. "We appreciate residents for who they are. We want to create a better environment for residents. They feel better, so they treat themselves, their families and their homes better."

Resident Services

Hope and Pride in Over-the-Rhine

On September 4, 2007, Betty was sitting in Ziegler Park in Over-the-Rhine. It was a true low point in her life, but she quickly learned that anything is possible with the support of a caring community.

Pat Clifford, the then Director at the Drop Inn Center, walked Betty to the Drop Inn Center. When they arrived, Fanni Johnson (current OTRCH board member) and the Drop Inn team provided food, water and a bed. Most importantly, “They gave me my dignity back,” Betty said. Soon after, Betty was connected to Over-the-Rhine Community Housing, moved into an apartment and got involved with the 12-step community at Recovery Hotel. “I was there 5 days a week and kept coming back, building my network of support, gaining the tools for change and building my pride.”

Today, Betty is 52 years old and celebrated 10 years clean on September 5, 2017. “Simply put, the Recovery Hotel is my foundation.”

Betty earned her GED on October 11, 2017. She is a certified home health aide. Betty is currently working towards a chemical dependency counselor certification and began taking classes at Cincinnati State.

“Today I’m filled with a tremendous sense of hope and gratitude. So much is going right for me thanks in large part to the community at Recovery Hotel. Thanks and please know that I’ll keep coming back.”



Betty inspired the audience by sharing her story at our 10th Annual fundraiser, Celebrating Our Beloved Community.

Providing Resident Services at Cutter Apartments

Last year OTRCH, in partnership with Wallick Hendy, rehabbed 40 affordable housing units in Pendleton called Cutter Apartments. 2017 marked our first year of offering supportive resident services for Cutter’s residents. Resident Services Advocate Lauren Stoll, who manages service provision at Cutter said, “My primary role is connecting residents to existing resources to help them maintain housing stability.” For example, Lauren connected several residents to the Freestore Foodbank so they could

access groceries and to St. Vincent de Paul so they could affordably furnish their homes.

Another way we support residents is by facilitating enrollment in the Community Action Agency’s Percentage of Income Payment Plan (PIPP). PIPP is a program aimed at making utilities affordable based on income. Appointments are difficult to secure, so we began facilitating enrollment so residents could keep their lights on without draining their income. Nearly a quarter of Cutter’s residents enrolled in PIPP in 2017 so they could keep their utilities affordable.



OTRCH organizes block parties to engage residents and celebrate community. At the Fall 2017 block party, residents enjoyed food, drinks, bingo, basketball, snowcones, facepainting, and more.



24 women participated in Women of Over-the-Rhine, our resident-led peer-to-peer women’s support group



53 children attended Children’s Creative Corner, our after school art program that gives low-income youth a positive, creative outlet



32 children attended YMCA’s Camp Ernst last summer



61 residents reduced their utility costs by enrolling in the Percentage of Income Payment Plan with support from the OTRCH Resident Services team

We are grateful to **PNC Bank** and the **Ohio Capital Corporation for Housing** for their continued support of our Resident Services programs in 2017.



Resident Services Activities in 2017

Women of Over-the-Rhine

OTRCH's peer-to-peer women's support group joined the Family Independence Initiative in 2017. FII brings a new approach to fighting poverty by investing directly in low-income families across the nation so they can work individually and collectively to achieve their goals, such as purchasing a home or continuing education.



Anna Louise Inn

Since OTRCH assumed a more prominent role in the day-to-day operations at Anna Louise Inn, our residents have increased access to engaging activities. Our team regularly organizes community-building events including weekly sewing groups, exercise classes, monthly meditations,

field trips to the Contemporary Arts Center, and more.



Scattered-Site Services

As the need for affordable housing and supportive services has increased, OTRCH has adapted by expanding our case management services to support residents who live in scattered-site units around Hamilton County. In 2017, we hired two new case managers to support 100 more residents.

Trauma Informed Care

Christine Lottman, MSW, LISW-S conducted trauma informed care (TIC) trainings for OTRCH staff in 2017. TIC is an organizational structure and treatment framework that involves understanding, recognizing and responding to the effects of all types of trauma. Many residents have been impacted by trauma in their lives, so these trainings have helped us serve them with increased sensitivity.



OTRCH on Community Council

OTRCH's staff, board and residents are deeply rooted in the community, and many are actively involved with the OTR Community Council. Maurice Wagoner on our maintenance team was elected President this year and staff member Amy Silver is OTRCC's secretary. OTRCH board member Mike Bootes and part-time staff member/OTRCH resident Thomas Fields are also on OTRCC's board.

YMCA Camp Ernst

Camp Ernst is one of the major highlights of the year for the youth we serve. Through our partnership with the YMCA, youth are able to attend Camp Ernst at an affordable rate. Because many of the families we serve cannot afford the cost of summertime activities for their children, camp helps reduce the isolation children might

otherwise experience over the summer and helps them build resilience skills such as confidence and self-esteem.



Employment Program at Jimmy Heath House

Those who have experienced long-term homelessness often face significant barriers to employment, including a lack of educational credentials and transportation, long periods of

substance abuse or technological shortcomings. The Employment Program was established to support Jimmy Heath House and other supportive housing residents seeking employment by assisting with job searches, resume development, interview training and transportation. 50 referrals came from shelters and supportive housing providers, resulting in 15 individuals placed in full or part-time employment.



Miami University's Over-the-Rhine Residency Program

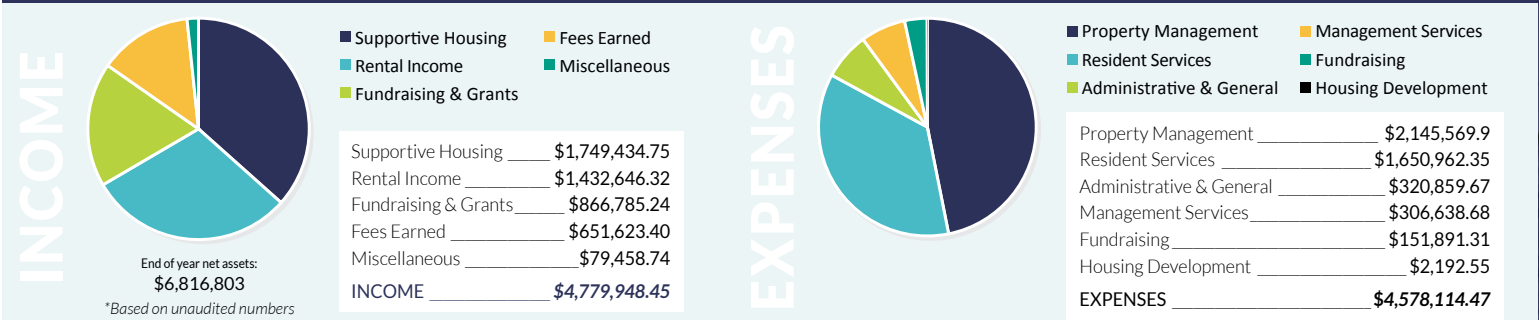
In 2017, we hosted 15 students for the 12th year of this community/university collaboration. Students worked with schools and community organizations throughout OTR and Lower Price Hill.



Please join us in making OTR a diverse, inclusive neighborhood:

- Visit www.otrch.org to learn more about us, sign up for emails and newsletters or make a secure donation
- Contact us to schedule a time to tour our properties or inquire about volunteer opportunities
- Register OTRCH as your charity of choice with Kroger Community Rewards and AmazonSmile.

2017 FINANCIAL SUMMARY





Faces of Homelessness was created in partnership with Strategies to End Homelessness and ArtWorks. The design was created by ICY AND SOT and the mural appears on the wall of OTRCH's Recovery Hotel, located at 1225 Vine Street.

Permanent Supportive Housing

“A WALKING, TALKING MIRACLE”: DIONNA’S STORY

“Being at Recovery Hotel gives me a sound and secure chance at real housing in a safe environment surrounded by recovery, 12 step meetings, onsite counseling, and most of all – LOVE.”

Dionna is a current resident at Recovery Hotel. She’s a little different from most residents who move into Recovery Hotel because she found recovery almost 3 years ago.

“I committed to recovery as I went from hotels to friends to living out of my truck. I was religious about going to meetings and staying focused. I was tired of hustling whatever I needed to make ends meet,” Dionna says.

Dionna attended 12-step meetings at Recovery Hotel on a daily basis where she met Program Coordinator Christine Wooten.

“I hounded Christine for an apartment at Recovery Hotel, but she could see I was always doing what I wanted to do and put some demands on me to prove I really wanted to be there. Christine let me know that I had to check my sense of entitlement. It took many months for me to understand that I had to make

a genuine effort that involved showing remorse and making amends to me and the community. I moved into Recovery Hotel in January 2017.”

Dionna and other residents at Recovery Hotel say it provides them with the stability they need to focus on their recovery. *“I’ve also been able to give back to the community that I took so much from. I participate in numerous community events with several groups to raise awareness about the challenges of homelessness and need for affordable housing.”*

“Today, I feel like I am a walking, talking miracle. But it took the help of a team of community activists and organizations to spark the flame in me to turn my life around and motivate me to now give back. My goals are to live as an artist, continue to give back, and get a Masters degree in Fine Arts. I am so grateful for what I have and where I am. Thank you.”

Dionna recently earned a scholarship to the Art Academy of Cincinnati, where she’ll begin working towards her degree.



OVER-THE-RHINE COMMUNITY HOUSING OPERATES NINE SUPPORTIVE HOUSING PROGRAMS FOR INDIVIDUALS AND FAMILIES WHO HAVE EXPERIENCED HOMELESSNESS. WE UTILIZE A RANGE OF MODELS, FROM RECOVERY ORIENTED TO “HOUSING FIRST.”



341 adults
16 children
67% male
33% female



50% site-based housing
50% in scattered-site units
98% have maintained housing
3 years average length of stay



55% from the streets
45% from the shelter



43% have achieved income
9% are employed

2017 BOARD OF TRUSTEES

Roger Auer - *President*
Georgia Keith - *Vice-President*
Jonathan Diskin - *Treasurer*
Bonnie Neumeier - *Secretary*
Michael Bootes
Ken Bordwell
Bridgette Burbanks
Nicholas DiNardo
Brian Fagan
Fanni Johnson
Robert Pickford
Allen Woods

STAFF

ADMINISTRATION

Mary Burke Rivers - *Executive Director*
Ty Black - *Finance Director*
Lisa Cecil - *Controller*
Patrice Smoot - *Staff Accountant*
Katie Knipe - *Fund Development Director*

PROPERTY MANAGEMENT & MAINTENANCE

Tanya Murphy - *Director of Property Management*
DaKenya Gunn - *Compliance Manager*
Cynthia Talbert - *Property Manager*
Cynthia Bell - *Leasing Manager*
Carol Strayhorn - *Front Desk Manager*
Thomas Fields - *Property Management Administrative Assistant*
Carl Combs - *Director of Maintenance*
Tim Carter - *Maintenance*
Jason Gudorf - *Maintenance*
Paul Sweet - *Maintenance*
Bobby Taylor - *Maintenance*
Maurice Wagoner - *Maintenance*
Michael Gramann - *Maintenance*
Harper Andrews - *Groundskeeper*

PROPERTY DEVELOPMENT

Ashleigh Finke - *Director of Real Estate Development*
Ryan Dyson - *Asset Manager*

RESIDENT SERVICES

Andy Hutzel - *Director of Housing Services*
Jill Stein - *Housing Coordinator*

Anne McDonald - *Permanent Supportive Housing Case Manager*
Michelle Christopher - *Permanent Supportive Housing Case Manager*
Jacob Merritt - *Resource Coordinator*
Amy Silver - *Resident Services Coordinator*
Lauren Stoll - *Resident Services Advocate*
Sean Guilfoile - *Anna Louise Inn Program Coordinator*
Emily Stant Kelley - *Anna Louise Inn Activity/Children's Creative Corner Coordinator*
Candace Smith - *Anna Louise Inn Activity Security Monitor*
Valarie Truss - *Anna Louise Inn Activity Security Monitor*
Robin Stanley - *Anna Louise Inn Building Manager*
Angela Merritt - *Women of Over-the-Rhine Coordinator*
Christine Wooten - *Recovery Hotel Program Manager*
Milton Keith - *Recovery Hotel Building Monitor*
David Elkins - *Jimmy Heath House Program Coordinator*
Katie Fogle - *Employment Program Coordinator*
Joe Wynn - *Jimmy Heath House Front Desk Staff*
Wister Ausberry - *Jimmy Heath House Front Desk Staff*
Robin Boles - *Jimmy Heath House Front Desk Staff*
Robert Bowman - *Jimmy Heath House Front Desk Staff*
Mike Brown - *Jimmy Heath House Front Desk Staff*
Markita Coach - *Jimmy Heath House Front Desk Staff*

Bonnie Seymore - *Jimmy Heath House Front Desk Staff*
Glenn Ward - *Jimmy Heath House Front Desk Staff*

INTERN

Bret Olson



20th Celebration

DaKenya Gunn celebrated her 20th anniversary of working at OTRCH. The staff went roller skating at the OTR Rec Center to celebrate.

Santa

Our Finance Director dressed up as Santa to entertain our youth at the annual Resident Holiday Luncheon.

US Bank

Members of our staff and board are pictured with US Bank's "Coach Possible" at the Superheroes of Republic Street Playground ribbon cutting event.

FRIENDS & SUPPORTERS

\$10,000.00+

Anonymous
Bank of America
Foundation
Christ Church Cathedral
KeyBank Foundation
Ohio Capital Corporation
for Housing
PNC Bank, Community
Development
Robert H. Reakirt
Foundation, PNC Bank,
Trustee
The Carol Ann and Ralph V.
Haile Foundation
U.S. Bank, Community
Affairs

\$5,000.00 - \$9,999.00

ArtsWave
First Financial
Bank, Community
Development
Martha Gitt
Ohio Capital Corporation
for Housing

\$2,500.00 - \$4,999.00

BB&T
Cincinnati Center
City Development
Corporation
Fifth Third Bank
Ken Bordwell and Mary
Anne Curtiss
General Electric Evendale
Plant Employees
Community Service
Fund
Jurisdiction-wide Resident
Advisory Board
William and Suzanne
Joiner Family Fund of
The Greater Cincinnati
Foundation

Miami University Center
for Community
Engagement in Over-
the-Rhine
Ruth J. and Robert A.
Conway Foundation
William and Roberta
Lotreck Silver

\$1,000.00 - \$2,499.00

Anonymous
BB&T
Martha Bolognini
Dorothy Christenson
Clark Schaefer Hackett
& Co.
Community Shares of
Greater Cincinnati
Dan Dell
Robert Donovan
John Dreves
Ben Eilerman and Mary
Ellen Mitchell
Elder High School
Eli's Barbeque
The Carter Memorial Fund
First Unitarian Church
of Cincinnati
Franciscan Friars -
Province of St. John the
Baptist
John and Cheryl Fromhold
William Groneman and
Maureen Flanagan
Impact Services
Jack Cincinnati Casino
Bonnie Neumeier and
Michael Flood
NKU Scripps Howard
Center for Civic
Engagement
Barbara and Butch Otting
Brenden Regan
James Rubenstein and
Bernadette Unger
Sisters of Charity of
Cincinnati
The Marianist Province of
the United States

\$500.00 - \$999.00

Roger and Mary Glynn
Auer
Bayer Becker
Roger and Janice Brown
Jennifer Cahill
Lynne Curtiss
Nicholas and Anne
DiNardo
Brian and Cathleen Fagan
First English Evangelical
Lutheran Church
Paul Gaitan
John Gardner and Kathy
Woeber Gardner
Glaserworks
Patty Hord
Huntington National Bank
John Hueber Homes
Scott Knox
Robert and Barbara
Knueven
Matthew Latchaw and
Lyric Morris
Christopher Ledwin
Legal Aid Society
Iris Libby
Model Group
Daniel and Tanya Murphy
Cassie and Parker
Niemann
PayPal Charitable Giving
Fund
Margaret Quinn
Steve Schreiber
Gerald and Therese
Stricker
The Home Depot Incentive
Program
VonLehman CPA &
Advisory Firm
Joseph Wessling

\$250.00 - \$499.00

Norah Frances Adam
John and Jenny Benton
Steve and Katrina Booker
Robert and Victoria
Cianciolo

Cincinnati Development
Fund
Clubessential LLC
Conner Middle School
David Cramer and Ruth
Crystal
Lahray Curtis
James and Kathy Debrosse
Jonathan Diskin and Diane
Stemper
Nita Dotson
John and Barbara Fillion
Finance Fund
Cathy and Brian Fowler
David and Judy Harpenau
Andy Hutzel and Amy
Harpenau
John and Andrea Kornbluh
Kroger Rewards Program
Dave Logan
Magnified Giving
Mark Manley and Annette
Januzzi Wick
Anne O'Connor
Osterwisch Company
Robert Pickford and Linda
Harig
Queen City Radio
Rhinegeist
Nancy Richardson and
Elaine Huber
Leonard and Mary Burke
Rivers
David and Mary Rudemiller
Mike Stehlin
John and Eunice Timoney
Ravenna
Christine and Samuel
Wooten
Juliet A. Zavan

\$100.00 - \$249.00

Anonymous
David Adams
George and Pecola Akins
Douglas Appler
Stefan and Nancy
Athanasiadis
Anthony Becker and Susan
Wheatley

Bob Bonder
John and Suzanne Bossert
Ellen Briggs
Bea and Richard Broder-
Oldach
Michael and Marianne
Brunner
Gregory and Michelle
Budzek-Brodrick
Shirley Burke
Lisa and Dan Burns
Michael and Nedra Burson
Lisa and Michael Cecil
Cincy Powerfest
Cornerstone Corporation
for Shared Equity
Ellen and Pete Costanzo
Jon Cramer and Jen Walke
Steve and Stephanie
Cunningham
Melissa Currence
Charles and Anne Cusick
Mary and Michael Delaney
Kathleen DeLaura
Angie Denov and Jon
Blickenstaff
Dorothy Day Center for
Faith and Justice
Bob and Carrie Driehaus
Samuel and Nancy Duran
Jane Durrell
Robert Egbert
Steve Elliott and Janet
Weber
Joseph Feldhaus and
Marcheta Gillam
Dennis Finney and Laurel
Frank
Gerald Froehlich and Laura
Goodell
Don and Mary Jane
Gardner
John Getz and Jo Anne
Gibbons
William and Louise Gioielli
Steven and Shelley
Goldstein
Mike and Sandra
Governanti

Francis and Christine
Gudorf
William Haigh and Kate
Silver
Peter Hames
Mindy and Eric Hammer
Roseann and Kevin Hassey
Conrad and Carol Haupt
Cynthia Heinrich and
Nick Payne
Katy Heins and Pat Clifford
Jim and Jill Hider
Midge Hines
Carol and David Holt
Lawrence Holt
Carla Kampschmidt
Georgia and Milton Keith
Matt and Gina Keith
Kestner Waggoner
Restoration Group, Inc.
Joseph Kiesler and Bruce
Giffin
Robert Knueven
Tim Kraus
Marianne Lawrence and
Randy Lykins
Barbara and Phil
Lichtenstein
Sabrey and Anne Glynn
Mackoul
Bryan and Carolyn
Madison
Mark Mahoney
Robert and Joyce Maly
Anne Martina
Srs Monica McGloin and
Janet Linz
Kevin and Chris McHugh
Meisel Family Foundation
Ryan Messer and Jimmy
Musuraca
Victoria Montavon and
James Myers
R. Mukund and D. Sangeeta
Kathryn Murphy and
Steven Plachinski
Donald Nesbitt and Jeanne
Kortekamp
Marianne Newman

Michael Otting and
Stephanie Blount
Catharine and Joseph
Pflum
Mike Phillips
Marianne Lamey Pod and
Janice Vogeler
Meili Price
Pam Priddy
Ann Retford
Susannah Reynolds
Stephen Richey and Sharon
Nuckols
Mary Clare Rietz and
Michael Marcotte
Leslie Ritter
Robert and Mary Ann
Roncker
David Rosenthal
Mark and Kathy Sackett
John and Ruth Schrider
Larry and Kathy Schwab
Kenneth and Alice Skirtz
Tom and GERALYN Sparough
Lindsay Stenovec
Gerald Stricker II
Jennifer Summers and
Brennan Grayson
Stephanie Sweeney
Carlos and Roberta Teran
Kenneth and Elizabeth
Weartz
Kim Wehmeier
Terri Wellman
Tom and Paula Williams
Tender Mercies
Laurie Wissel
Rob Wissel
Marcus Wolnitzek
William Woods
Amy Youngblood
Peggy Zink

UP TO \$100

Anonymous
Sarah Allan
Joan Allen
Ronald and Chris Auer
Cynthia Campbell Bell
Joe and Noma Jewell

Bellisemo
Sarah Catherine Billups
Harry Blanton
Tom Borchert
Angie Butler
Richard and Diane Cappel
Stella Chang
Michelle Christopher
Dale and Dianne Clark
Leslie Cook
Catherine Crichlow
Diane Debevec
Patricia Dion
Dominican Sisters of Hope
David Elkins
Priscilla Faux
Kara and Gregg Feltrup
Ashleigh Finke
Futbol Club Cincinnati LLC
Jim and Louise Gomer
Bangel
Cynthia Goslee
Thomas Grogan
Jeffrey Grothaus
Janet Haigh
Valerie Heiby
Jessie Henson
Janet Hirlinger
Donald and Ann Hutzel
Lorita Jennings
Rhonda Jennings
John Joerling and Teresa
Clear
Kenneth Jones
Nathaniel Kaelin
Graham Kalbli
Daulton King
Danny Klingler
Katie Knipe
Samuel and Marie Schotz
Kocoshis
Chuck Lohre
Johanna Looye
Kathryn and Steven Lown
Dan Mahan
Jennifer Malat
Anne McDonald
John and Mary Carol
Melton
Joe and Carol Metz

Hannah Meyer
Joel Miller
Aram Moore
Robert and Judith Neal
Andrew and Meghan
Neumeier
New Jerusalem
Community
Jane Orthel
Power Inspires Progress
Michael Privitera
Emily Resnik
John and Rebecca Ristau
Margaret Saunders
Christine and Robert
Scheidler
Schickel Design Company
Stephen Sendelbeck
Brooke Shanessy
Kevin and Jane Shea
Louis Snowden
Sharon Spencer
Louisa Stark
Dorsey Stebbins
Rebecca Stone
Daniel and Suzanne
Thompson
Frances Turner
Margaret Warminski
M. Judith Webb Squire
Russell Winters
Linda Ziegler
Clare Zlatich Blankemeyer

GIFTS IN-KIND

A Fostered Child
Big Ass Fans
Michael Bootes
Lisa Burns
Cincinnati Center
City Development
Corporation
Cincinnati Development
Fund
Ellen and Pete Costanzo
Deaconess Associations,
Inc.
Nita Dotson
Martha Gitt
Ignite Philanthropy

Prince of Peace Lutheran
Church
Rhinegeist
Beverly Thomas
Steve Shin
Thunderdome
Management Inc.
TriVersity Construction
Group
University of Kentucky
Kenneth and Elizabeth
Weartz

VOLUNTEERS

The Eastern Hills Friends
Group
Elder High School
Cathleen Fagan
Future Leaders of Over-
the-Rhine
Greater Potter's Temple
Christine Lottman MSW,
LISW-S
The Mayerson Service-
Learning Program
Miami University Center
for Community
Engagement in Over-
the-Rhine
Moeller High School
University of Notre Dame
Alumni Club
Chaplain Bea Oldach
OTRCH Board of Trustees
Purcell High School
Starbucks
UC College of Medicine
ROSE Program
UC College of Medicine
Physicians and Society
Group
US Bank
Tom Waner
St. Xavier High School
X-CHANGE
Mary Birk
Seam Team
Isaiah 55 Ministries



114 West 14th Street
Cincinnati, OH 45202
513-381-1171 • www.otrch.org

NON PROFIT ORG
U.S. POSTAGE

PAID

CINCINNATI, OH
PERMIT No. 4652



HOUSING FIRST. COMMUNITY ALWAYS.
OUR 2017 ANNUAL REPORT IS HERE!