

Over-the-Rhine Community Housing

WHERE COMMUNITY COMES FIRST



*"It takes courage, risk, and a lot of faith to believe in something different for our world and our neighborhood."
– Bonnie Neumeier, OTRCH Resident Board Member*

2016

Annual Report

OUR MISSION

We develop and manage resident-centered affordable housing to build inclusive community and benefit low-income residents.

OUR VISION

Quality stable housing for all in a socially, racially and economically inclusive community.

OUR VALUES

- Housing is a right and should be available to all.
- All people deserve dignified housing.
- Housing must include the most vulnerable members of our community.
- All relationships must be shaped by justice, community and inclusion.
- Neighborhood amenities and services are available for all members of our diverse community.
- All persons are respected and valued.

GREETINGS

We all face many challenges every day. It could be a sick family member or friend who needs care, a child who is being oppositional, or a real or perceived wrong by a neighbor. It could be financial stress or maybe the lack of sunlight in the winter months. Most recently, it could be a combination of things that get us angry, frustrated, or feeling hopeless.

The beauty of working here at Over-the-Rhine Community Housing is that we can't stay in that negative space for long. Right in front of us are everyday heroes. People who go above and beyond in big ways and small ways. How can we stay angry when we see any one of our co-workers providing care and concern for a resident, or providing the dignity of 'home' for a family that hadn't experienced a settled place in years?

In this 2016 Annual Report you'll get a glimpse into our world. You will see the impact your investment makes in real people's lives. How the stability of home and a community of care enables people to pursue and fulfill dreams. You will see that Over-the-Rhine Community Housing provides more than affordable housing. We are a refuge, a safe place where we all become part of something larger than our individual efforts.

We have a beautiful thing happening here at Over-the-Rhine Community Housing. Witnessing it pulls us up when we are fearful, disappointed, or mourning. We hope that by reading this 2016 annual report you will experience that same inspirational feeling that you are part of something that is inclusive and life-giving.

We believe that there are lot of people who are looking for a place to get involved and take a stand in support of equality, diversity, and equal opportunity. We believe OTRCH could be that place. A powerful way one can overcome the frustration resulting from what is happening or not happening on the world stage is to invest one's passion locally and make a visible difference.

We invite you to walk with us on our path to creating a socially, racially, and economically inclusive community.

ROGER G. AUER
President, OTRCH Board of Trustees

MARY BURKE RIVERS
Executive Director



“There are so many people living in Over-the-Rhine, some of whom have been here for decades, who are doing things every day to make their community better, not just for themselves, but also for their neighbors.”

– Hayley Huge, Miami University Residency Program Student, Class of 2016

OUR RESIDENTS

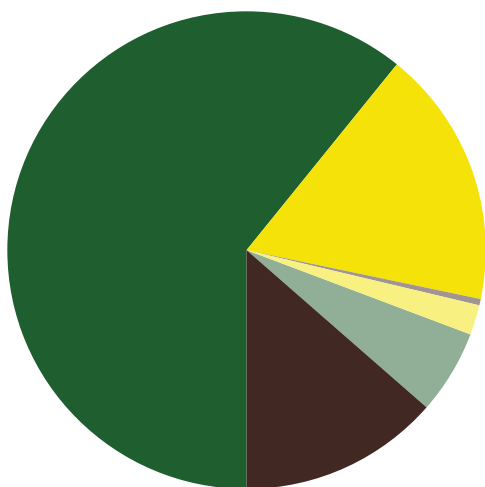
Linda thought she was done raising children, but when she got the call asking her to take custody of her three grandchildren, Robin, Will, and Amoz, she responded with a resounding “YES!” Linda could embrace this unexpected challenge because she lives in a stable, affordable home that doesn’t cause her undue financial stress. Amoz is leaving for college in a few weeks, a testament to the hard work he put in under his grandmother’s watchful eye and roof. Will looks up to his brother and is following his footsteps. Robin holds Linda’s hand when they walk down the streets of OTR. Their grandmother is the epicenter of their home and invites joy and purpose into all that they do together. Instead of feeling overwhelmed with anxiety over how to make enough money to keep her grandkids safe and supported, Linda’s moments are spent holding Robin’s hand as she listens to her talk about her day at school.

— Sophia Cunningham, Youth Development Coordinator



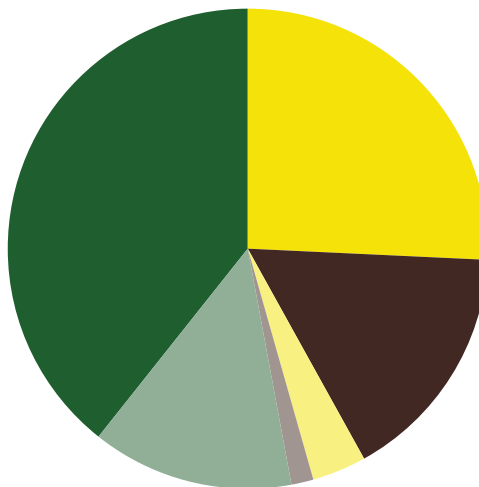
The challenge of affordable housing is easy to grasp – affordable rent is lower than the cost of developing and maintaining an apartment. Our residents make important contributions to society, but many of them do not earn a living wage.

Resident Income Source



Employment 60%	Public Assistance 5.7%
Social Security 17.6%	Child Support 2%
None 13.4%	Disability 0.4%

Resident Yearly Income



\$1,000 - \$9,999 39.3%	\$0 - \$999 13.6%
\$10,000 - \$19,999 25.7%	\$30,000 - \$39,999 3.7%
\$20,000 - \$29,999 16.2%	\$40,000+ 1.5%

839 Residents served in 2016

OTRCH offers a variety of housing options and services designed to ensure that everyone in our community - seniors, low-income households, individuals with disabilities, and those struggling with addiction and recovery - has access to safe, decent affordable housing. Below is a snapshot of everyone we served across all of our program areas in 2016, including those served through Shelter Plus Care rental subsidies in scattered-site housing:



32% children
53% adults
15% seniors



88% black
11% white
1% other



“They [Over-the-Rhine Community Housing] gave me a chance when nobody else would. It kind of reminds me of my own life... taking a burnt out shell of a place and fixing it up into what it can be.”

—Todd Hanley,
Recovery Hotel Resident

PROPERTY DEVELOPMENT

Preserving Affordability in Pendleton

Over-the-Rhine Community Housing develops new properties and rehabilitates existing properties to provide high-quality affordable options for our residents and commercial tenants. In 2016, OTRCH rehabilitated existing affordable housing in the Pendleton area through the Cutter Apartments project in partnership with Wallick Communities.

Importance to the Neighborhood:

All units in Cutter Apartments are subsidized by a project-based subsidy through HUD. This subsidy allows residents to pay 30% of their adjusted gross income on rent and utilities. These buildings were renovated in the 1990's, but were in desperate need of improvement to meet today's living and safety standards. This affordable housing will be preserved for another 30 years, which is critical as the Pendleton neighborhood has recently seen an increase in market rate development near the new casino.



Asset Management Accomplishments

In order to strengthen our organizational capacity, we hired an asset manager to maximize the performance of our real estate assets and ensure that our properties remain in good condition to continue serving our residents and mission.



64 OTRCH Properties

surveyed for capital repair needs

24 OTRCH Roofs

assessed to determine what roof repairs/replacements will be necessary



\$106,300

revenue generated by renting out our existing parking lots by the hour to support our mission.

New Projects in 2017!

OTRCH was one of 7 organizations in the state of Ohio to have two or more projects selected to receive Low Income Housing Tax Credits in 2016. The Ohio Housing Finance Agency selected only 42 projects out of 93 applications and OTRCH received two of the awards! OTRCH is excited to start construction on both projects (Morgan Apartments and Carrie's Place) this year.

Cutter Apartments

8-building scattered site affordable apartment community in Pendleton

Opened:

November 2016

Units:

40 rehabbed units of affordable housing (mix of 1, 2, and 3 bedrooms, 4 units to people with incomes below 35% of AMI, 12 units for people with incomes below 50% of AMI, 24 units for people with incomes below 60% AMI)

Total Project Cost:

\$6,231,923

Developer:

Over-the-Rhine Community Housing and Wallick Communities

Funders:

Ohio Housing Finance Agency, The City of Cincinnati, Federal Historic Tax Credits, Ohio Capital Corporation for Housing, Ohio Capital Finance Corporation, Over-the-Rhine Community Housing, and Wallick Communities.

PROPERTY MANAGEMENT

Building Community and Supporting Residents for Life

Ms. Anne is 96 years old. She was our oldest resident, in both age and length of residency. We're not sure how long she lived in her one bedroom apartment on Elm Street, but we know it was well beyond the old lease that was in her file signed over 25 years ago.

In 2014, we approached Ms. Anne about relocating to our beautiful new building, Elm Street Senior Housing. This option offered many conveniences that her current apartment lacked, such as intercom entry, an elevator, accessible laundry, and most importantly, subsidized rent. Ms. Anne just wasn't ready to leave her long time OTRCH home.

Last summer, we asked if she was interested in a new senior housing development at the Central Parkway YMCA, a few blocks south of her current apartment. We were encouraged that she said she would "consider" moving. Her name finally reached the top of the wait list and we were pleasantly surprised when she agreed to look at an apartment...it was time to move!



When the big day arrived, we arranged for the delivery of new furniture and household items that were perfect for her new apartment. Ms. Anne is settling in and says she loves her new home. It was bittersweet for the OTRCH family when our oldest resident moved out, but we were happy that she handled the move so well and that she is receiving the support she needs.

We believe that resident-centered housing should focus on assisting low-income individuals and families maintain quality affordable housing and support services even if we occasionally have to look beyond our own portfolio of properties. We know that we will stay connected to Ms. Anne and we look forward to seeing her pushing her walker around the OTR neighborhood that she has loved and called home for so long.

— Tanya Murphy, Director of Property Management



As part of our mission, Over-the-Rhine Community Housing endeavors to ensure that residents have a say in organizational governance. OTRCH resident Bridgette Burbanks said, "OTRCH gave me my very first apartment. They even gave me the opportunity to be a resident board member. Thank you so much for believing in me."

"We believe that resident-centered housing should focus on assisting low-income individuals and families maintain quality affordable housing and support services even if we occasionally have to look beyond our own portfolio of properties."

—Tanya Murphy, Director of Property Management

589 Residents Served
142 OTRCH Properties

Our property management and maintenance team works to maintain our beloved buildings and attend to the housing needs of our residents. In providing housing and support to our residents, we know that we are not only providing them a place to live, but we are also helping build a community in which they can thrive.



410 affordable apartments
14 commercial spaces
2 parking lots



240 applications processed



68 new individuals and families



96.9% average occupancy rate

RESIDENT SERVICES

A Safe, Dignified, Affordable Apartment is Only the Beginning

During a period of homelessness, Stacey and her five children found themselves in a shelter. Without a kitchen, how could Stacey make her kids breakfast before sending them off to school? Without a quiet place to study, how would they be able to finish their homework? Without a home, these everyday activities become overwhelmingly difficult. In 2013, they finally found a safe, dignified, affordable apartment on E. Clifton. Stacey's family has flourished with the support of affordable housing. With this vital safety net, she could secure employment and stay in a neighborhood she loves.



Stacey lives near Findlay Market where she and her family are greeted with friendly, familiar faces each time they shop. She uses public transportation to get to work, so living in a neighborhood where the bus is accessible is important. Stacey and her family feel safe in their apartment, and she says she is grateful to be a resident of OTRCH.

"Having this apartment has been a blessing, because sometimes I struggle - it gets hard having 5 kids and trying to work. I don't like asking for help, which sometimes puts me in bad situations, but I get past it and get to work. I love my apartment."

Stacey says her family has come a long way since moving in with OTRCH. Of the staff, she says, "They have been there through it all and have always had my back. They stuck in there with me and supported me." We are grateful to have valuable residents like Stacey and her family whose light shines bright in our community.

— Lauren Stoll, Resident Services Advocate



In 2016, 32 children experienced the magic of summer camp at YMCA's Camp Ernst.

"Having this apartment has been a blessing, because sometimes I struggle - it gets hard having 5 kids and trying to work. I don't like asking for help, which sometimes puts me in bad situations, but I get past it and get to work. I love my apartment."

— Stacey, OTRCH Resident

At Over-the-Rhine Community Housing, we are focused on ensuring affordable housing for low-income residents and providing supportive services that improve their quality of life. Our resident services staff works with residents on an individual basis to help them achieve their personal goals while maintaining housing. Below are only a few of the many ways our resident services team supports our residents:



accessing physical and mental healthcare



connecting with educational resources



securing employment



maintaining utilities

Program Snapshot

Our resident services staff is also responsible for coordinating programs and activities that support residents as they grow and flourish.

At **Children's Creative Corner**, we seek to cultivate an environment in which youth of Over-the-Rhine may grow personally and creatively while developing a strong sense of community both inside the classroom and out.

Developed to offer a nurturing and creative outlet for low-income youth in the neighborhood, the program is structured to be highly accessible, meeting twice weekly at 220 East Clifton Ave, a space central to many young families in the community.



Women of Over-the-Rhine is a peer-to-peer support group that formed in December 2015 and is facilitated by Over-the-Rhine Community Housing resident Angie Merritt. The program seeks to address the needs of low-income women by achieving three primary objectives:

1. The group provides emotional support to members in order to promote strength and solidarity for low-income women.
2. Members receive assistance with resume writing, job searching, and connecting with other employment resources to aid in professional growth.
3. Women of Over-the-Rhine inspires group members and broadens their experiences by inviting guest speakers, organizing community events, and planning field trips.



When the weather warms up, we celebrate OTR's ever-present beauty and camaraderie and throw block parties for our residents.

Sara had just moved to Cincinnati from Florida with her 3 year old daughter. They were homeless and struggling to find stability when they met Valerie, who brought them to a Women of Over-the-Rhine meeting.

“The only place I could think to bring her was here. There is still hope in Cincinnati.” said Valerie Dowell.

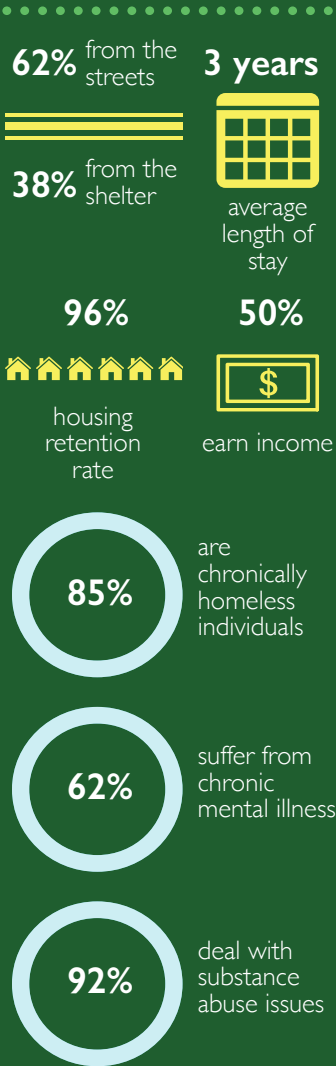
—Valerie is a Community Outreach Advocate with the Cincinnati Human Relations Commission and is one of the founding members of Women of Over-the-Rhine.

Miami University's Over-the-Rhine Residency Program

In 2016, we hosted 18 students for the 11th year of this community/university collaboration. Students worked with schools and community organizations throughout OTR and Lower Price Hill. Miami Architecture Professor and program founder Tom Dutton said, “Our cohort this year was terrific—totally engaged, open to learning and wanting to put themselves in unfamiliar situations in order to push their learning.” Thank you Miami University for another year of mutual growth and real benefit for all.

351 residents
in permanent supportive housing

Over-the-Rhine Community Housing operates nine supportive housing programs to offer homeless individuals and families. We utilize a range of models, recovery-oriented, and "housing first." Below is a snapshot describing where our residents come from and the obstacles they face on their paths to stability.



"This place is a blessing. Staff respect and listen to me here. Without it, I'd be nowhere." says Carl, who spent almost 1,200 nights in homeless shelters since 2004.

SUPPORTIVE HOUSING

The Invisible Hand That Lifts Our Residents: CR's Story

When you work at length with those in poverty, those who struggle with homelessness, mental illness, substance abuse, and trauma, you must accept that no matter what you do, their life is their own. In the life of CR, much of our work is in the background. Housing is sometimes an invisible hand that supports CR as he struggles with the neuromuscular disorder that twists his body, and will eventually end his life.

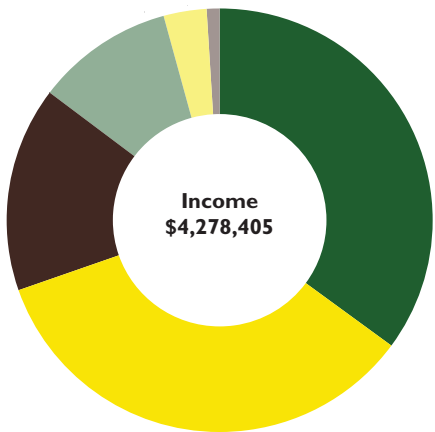
Though CR is in the later stages of this illness, he spent 2 years on the street before coming to the Jimmy Heath House, and he continues to be fiercely independent. Despite the physical challenges that inhibit his gate and make the slightest movement difficult, CR leaves his apartment almost every day, and with the determination of a boxer stepping back into the ring, he walks the 7 blocks to Our Daily Bread. It seems clear that this daily connection to the community is of vital importance to CR, and if we extend the metaphor of CR as a boxer stepping into the ring for a fight, then the Jimmy Heath House is his "Corner."

We stay in the background, but we are here to support him in his fight. We are a refuge when he needs to rest, we are present to address his wounds, and we are his coaches and cheerleaders as he takes his swings. We are a place for him to return to, and when he cannot make it on his own, his supporters in the community know where to bring him. Ultimately, the fight is CR's and we are privileged to be on his side.

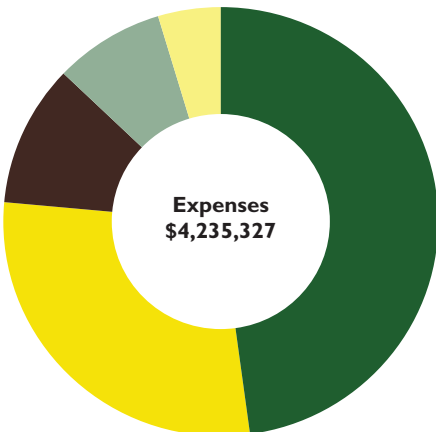
— David Elkins, Jimmy Heath House Program Coordinator



2016 FINANCIAL SUMMARY



Rental Income	Grants
\$1,498,569	\$447,180
Supportive Housing	Fundraising
\$1,483,859	\$141,661
Fees Earned	Miscellaneous
\$668,496	\$38,640



Property Management	Administrative and General
\$2,027,401	\$347,833
Supportive Housing	Housing Development
\$1,209,777	\$197,342
Resident Services	
\$452,974	

*Based on unaudited numbers

STAFF

ADMINISTRATION

Mary Burke Rivers - *Executive Director*
Tyrone Black - *Finance Director*
Lisa Cecil - *Controller*
Steve Franklin - *Accountant*
Katherine Cunningham - *Fund Development Manager*

PROPERTY MANAGEMENT & MAINTENANCE

Tanya Murphy - *Director of Property Management*
DaKenya Gunn - *Compliance Specialist*
Cynthia Talbert - *Property Manager*
Cynthia Bell - *Leasing Manager*
Carol Strayhorn - *Front Desk Manager*
Carl Combs - *Director of Maintenance*
Tim Carter - *Maintenance*
Jason Gudorf - *Maintenance*
Paul Sweet - *Maintenance*
Bobby Taylor - *Maintenance*
Maurice Wagoner - *Maintenance*
Bill Haigh - *Maintenance*
Harper Andrews - *Groundskeeper*

PROPERTY DEVELOPMENT

Ashleigh Finke - *Director of Real Estate Development*
Ryan Dyson - *Asset Manager*

VOLUNTEERS/INTERNS

Claire Cawley - *Student, Miami University*
Andrea Harrison - *Volunteer, Property Development and Asset Management*

SUPPORTIVE HOUSING

Andrew Hutzel - *Director of Housing Services*
Christine Wooten - *Recovery Hotel Program Coordinator*
Jill Stein - *Shelter Plus Care Administrator*
Jacob Merritt - *Resource Coordinator*
Amy Silver - *Resident Services Coordinator*
Sophia Cunningham - *Youth Development Coordinator*
Lauren Stoll - *Resident Services Advocate*
Patrice Smoot - *Resident Engagement Specialist*
Angela Merritt - *Women of Over-the-Rhine Coordinator*
Milton Keith - *Recovery Hotel Building Monitor*
David Elkins - *Jimmy Heath House Program Coordinator*
Joe Wynn - *Jimmy Heath House Front Desk Staff*
Wister Ausberry - *Jimmy Heath House Front Desk Staff*
Robin Boles - *Jimmy Heath House Front Desk Staff*
Robert Bowman - *Jimmy Heath House Front Desk Staff*
Mike Brown - *Jimmy Heath House Front Desk Staff*
Bonnie Seymore - *Jimmy Heath House Front Desk Staff*
Glenn Ward - *Jimmy Heath House Front Desk Staff*

BOARD OF TRUSTEES

Roger Auer - *President*
Georgia Keith - *Vice-President*
Jonathan Diskin - *Treasurer*
Bonnie Neumeier - *Secretary*
Michael Bootes
Kenneth Bordwell
Bridgette Burbanks
Nicholas DiNardo
Brian Fagan
Fanni Johnson
Robert Pickford
Jai Washington
Allen Woods



STAR AWARD

Each spring, the Over-the-Rhine Chamber of Commerce recognizes outstanding individuals and businesses in Over-the-Rhine during its Annual Star Awards event. Over-the-Rhine Community Housing was the recipient of the 2016 **Nonprofit of the Year Star Award**.

The following staff members were recognized in 2016 for their accomplishments and contributions to the community:

Ryan Dyson

2016 Outstanding Thesis and 2016 AICP Award for Outstanding Master's Student at University of Cincinnati's College of Design, Architecture, Art, and Planning.

Mary Burke Rivers

Ohio CDC Association's 2016 Ned D. Neuhausel Award honoring housing developers who demonstrate a lifelong commitment to people with disabilities.

Amy Silver

Greater Cincinnati Homeless Coalition's 2016 Julie Martin Service Provider of the Year.

Lauren Stoll

National Association of Social Workers Ohio Chapter M.S.W. Student of the Year.

FRIENDS & SUPPORTERS

\$10,000+

Christ Church Cathedral
Finance Fund
Helen Steiner Rice Fund of The Greater Cincinnati Foundation
Josephine Schell Russell Charitable Trust
Ohio Capital Corporation for Housing
PNC Bank
Thomas Emery Memorial Foundation

\$9,999 - \$5,000

Anonymous
The Carol Ann and Ralph V. Haile, Jr./U.S. Bank Foundation
Manuel D. and Rhoda Mayerson Foundation
The CDC Association of Greater Cincinnati
Union Savings Bank

\$4,999 - \$2,500

Anchor Properties, Inc.
BB&T
3CDC
First Financial Bank
Gregory and Susan Friedmann
William Groneman and Maureen Flanagan
Economics of Compassion Initiative
William and Suzanne Joiner Family Fund of The Greater Cincinnati Foundation
Kingsley + Co.
West Sixth Brewing

\$2,499 - \$1,000

Anonymous
Martha Bolognini
Mike Bootes
Cincinnati Area Board of Realtors
Community Shares of Greater Cincinnati
Robert Donovan
Elder High School
Eli's Barbeque
The Carter Memorial Fund, First Unitarian Church of Cincinnati
Greater Cincinnati Foundation
Jan Hirlinger
Cynthia Goslee
Macaron Bar
The Marianist Province of the United States
Robert McGonagle
Miami University Center for Community Engagement in Over-the-Rhine

Clark Schaefer Hackett & Co.
Bonnie Neumeier and Michael Flood
Barbara and Butch Otting
Franciscan Friars, Province of St. John the Baptist
James Rubenstein and Bernadette Unger
William and Roberta Lotreck Silver
Sisters of Charity of Cincinnati
U.S. Bank, Community Affairs
United Way of Greater Cincinnati
Virginia K. Weston Assistance Fund of the Greater Cincinnati Foundation
Ed Ward

\$999 - \$500

Roger and Mary Glynn Auer
Kenneth Bordwell and Mary Anne Curtiss
Roger and Janice Brown
Gregory and Michelle Budzek-Brodrick
City Studios Architecture
Parking Lot Management of Cincinnati
Jonathan Diskin and Diane Stemper
Brian and Cathleen Fagan
John Gardner and Kathy Woeber Gardner
Gregory and Kathleen Harmeyer
Patty Hord
Andy Hutzler and Amy Harpenau
Interact for Health
Scott Knox
Matthew Latchaw and Lyric Morris
Christopher Ledwin
Legal Aid Society of Greater Cincinnati
Xin Lu
Mark Manley and Annette Wick
Srs. Monica McGloin and Janet Linz
Charles McIntosh and Jamie Williams
Model Group
HGC Construction
Daniel and Tanya Murphy
Cassie and Parker Niemann
Catharine and Joseph Pflum
Margaret Quinn
The Home Depot Incentive Program

\$499 - \$250

John and Jenny Benton
James and Christine Chase
Robert and Victoria Cianciolo
Dorothy Day Center for Faith and Justice, Xavier University
Cathy and Brian Fowler
Paul Gaitan

Don and Mary Jane Gardner
Greater Cincinnati Homeless Coalition
David and Judy Harpenau
Robert Knueven
Kroger Rewards Program
Marianne Lawrence and Randy Lykins
Kathy and Brad Mank
Osterwisch Company
Robert Pickford and Linda Harig
Arthur and Mellen Reckman
Ann Retford
Mary and Leonard Rivers
David and Mary Rudemiller
Mark Shannon
Rachel Strasinger and Sophia Zapf
Gerald and Therese Stricker
Liz Vallano
Cathianne Watkins
Laurie Wissel
Christine and Samuel Wooten

\$249 - \$100

Charles Addei
Deborah Andrews
Douglas Appler
Ronald and Chris Auer
Beyondbeing
John and Megan Statt Blake
Jonathan Blickenstaff and Angela Denov
Ellen Briggs
Bea and Richard Broder-Oldach
David and Patricia Brown
Michael and Marianne Brunner
Dorothy Christenson
Patti and Larry Cunningham
Steve and Stephanie Cunningham
Claire Daugherty
Nicholas and Anne DiNardo
Nita "Catalpa" Dotson
Bob and Carrie Drieaus
Samuel and Nancy Duran
Martin Eisen
Steve Elliott and Janet Weber
Joseph Feldhaus and Marcheta Gillam
John and Barbara Fillion
Lydia Fitzpatrick
Gerald Froehlich and Laura Goodell
Alphonse Gerhardstein and Miriam Gingold
John Getz and Jo Anne Gibbons
William and Louise Gioielli
Goodfellas Pizzeria
Thomas Grogan

Francis Gudorf
 Peter Hames
 Mindy and Eric Hammer
 Jim Hider
 Carol and David Holt
 Lawrence Holt
 Teal Horsman
 Fanni Johnson
 Carla Kampschmidt
 Robert and Barbara Knueven
 Samuel and Marie Schotz Kocoshis
 John and Andrea Kornbluh
 Tim Kraus and Lois Gish
 Dave Logan and Dale Hodges
 Sabrey and Anne Glynn Mackoul
 Kathleen MacQueeney
 Anne Martina
 Meisel Family Foundation
 John and Mary Carol Melton
 Ann Meranus
 Clarence and Emily Miracle
 Victoria Montavon and James Myers
 Paul Muller
 Kathryn Murphy and Steven Plachinski
 Robert and Judith Neal
 Donald Nesbitt and Jeanne Kortekamp
 Marianne Newman
 North American Properties
 Sharon Nuckols and Steve Richey
 Michael Otting and Stephanie Blount
 Peaslee Neighborhood Center
 Marianne Lamey Pod and Janice Vogeler
 David and Laura Rapien
 Jeff and Lori Raser
 Rhinegeist Brewery
 Nancy Richardson and Elaine Huber
 John and Rebecca Ristau
 Leslie Ritter
 Robert and Mary Ann Roncker
 Harriet and Alvin Saperstein
 Schickel Design Company
 John and Ruth Schrider
 Tammy Schwartz
 Dianna Schweitzer
 Ann Seller and Robert Honkonen
 Amy Silver and Josh Spring
 Kenneth and Alice Skirtz
 Martha and Jerone Stephens
 Ellen Straus
 Gerald Stricker II
 Jennifer Summers and Brennan Grayson
 United Methodist Financial

Kenneth and Elizabeth Weartz
 Marcus Wolnitzek
 William Woods

Up to \$100

David Adams
 Rebecca and Jose Algenio
 Joan Allen
 Stefan Athanasiadis
 Henrietta and Franchot Ballinger
 Cynthia Campbell Bell
 Sandra Bell-Branham
 Gina Beraha
 Mary Anne and James Berry
 Tom Borchert
 Deborah Brod
 Shirley Burke
 Michael and Nedra Burson
 Evelyn Butt
 Lisa Cecil
 Dale and Dianne Clark
 Contact Center
 Over-the-Rhine Learning Center
 Katherine Cunningham
 Susan Davis
 Kathleen DeLaura
 James Denker
 Dominican Sisters of Hope
 Ryan Dyson
 Robert Egbert
 Kara and Gregg Feltrup
 Kira Fenske
 Andrea Ferguson
 Brian Ferguson
 Ashleigh and Andrew Finke
 Katherine Goslee and Laura Bogle
 Jeffrey Grothaus
 Dale Hayes and Terry Miller
 Shannon Hughes
 Mona Jenkins
 John Joerling and Teresa Clear
 Nathaniel Kaelin
 Georgia and Milton Keith
 Diane Laake
 Johanna Looye
 Kathryn and Steven Lown
 James Luken
 Bryan and Carolyn Madison
 Hannah and James Maloney
 Doug and Sheila Mansfield
 Jacob Merritt and Merilee McElveen
 Joe and Carol Metz

Hannah Meyer
 Barbara Neumann
 New Jerusalem Community
 Jeanne Nightingale
 Jane Orthel
 Raymond Owens and Leah Hoechstetter
 Angela Pancella
 Kirk Phillips
 Claire Pickus
 Alvin and Patricia Piller
 Michael Privitera and Marcia Kaplan
 Recovery Hotel Support Group
 Zach Rios
 Edward and Julia Rush
 Margaret Saunders
 Christine and Robert Sheadler
 Larry and Kathy Schwab
 Kevin and Jane Shea
 Edward Slater
 Clifton Sneed
 M. Judith Webb Squire
 Jill and Karl Stein
 Rebecca Stone
 Paul Sweet
 Sweet Petit Desserts
 John and Eunice Timoney Ravenna
 Frances Turner
 Charles and Fian Van Amburgh
 Amy Weber
 Bethany Weber
 Tom and Paula Williams
 Russell Winters
 Rob Wissel
 Allen Woods

Gifts In-Kind

Artonomy
 Cincinnati Symphony Orchestra
 Kismet OTR
 Macaron Bar
 Timothy Mara and Cliff Dase
 Marianne Lawrence and Randy Lykins
 Alex Parks
 Photonics
 Rhinegeist Brewery
 Pippin Rush
 Schmidt Heating and Cooling

Thank you for your support!



NON-PROFIT ORG.
U.S. POSTAGE
PAID
CINCINNATI OH
PERMIT NO. 4652

Over-the-Rhine Community Housing
114 West 14th Street
Cincinnati, OH 45202
513-381-1171
www.otrch.org

Our 2016 Annual Report is here!

JOIN US

Over-the-Rhine Community Housing (OTRCH) is a non-profit community development organization that provides a wide spectrum of affordable and supportive housing options with life-changing programs to help low-income residents grow and flourish. For over four decades, OTRCH has never wavered from our commitment to:

- build a sustainable, diverse neighborhood that values and benefits low-income residents
- create an inclusive community in this evolving historic district, and
- advocate on behalf of all our residents.

Please join us in making Over-the-Rhine a diverse, inclusive neighborhood:

- Visit www.otrch.org to learn more about us, sign up for emails and newsletters, or make a secure donation.
- Contact us to see how your skills and interest align with our mission, or set up a time to tour our properties.
- Register OTRCH as your charity of choice with Kroger Community Rewards and AmazonSmile.



“Over-the-Rhine Community Housing goes far and beyond with help they give their tenants. They don’t just give individuals an apartment to live in. They give them hope for the future.”

– Angie Merritt, OTRCH Resident and Women of Over-the-Rhine coordinator