



COMMUNITY HOUSING

Housing First. Community Always.

2019 Annual Report

DEAR FRIENDS,

As we reflect on 2019 a theme began to emerge – **Perseverance**.

There is our project on Vine Street that we named Perseverance. In 2019 we secured the tax credits needed to redevelop these historic buildings. The project will provide 34 units of affordable housing. As an added bonus this project includes 1517 Vine Street, a vacant building that we had sold in the early 2000's in an exchange that helped us secure the property for the Jimmy Heath House. Decades of sticking to our resolve to provide quality affordable housing in Over-the-Rhine led us to this project where the building ReSTOC bought in 1983 will provide quality affordable housing again. We believe that buddy gray is smiling wide for our Perseverance.

In 2019 we celebrated Andy Hutzel's 25-year anniversary. Andy has a rare combination of attributes seldom found in the same person. He is at all times focused on the goals of OTRCH, taking the necessary steps to achieve those goals, while maintaining a profound respect and sensitivity to the people he works with. Everyone likes this guy. What a gift he has been to the organization and to the many residents he serves.

There is our board leadership. Most of our Board members have been with us for a long time. They are very familiar with the often-repeated pattern of excitement, frustration, failure and finally, success. Persevere is what they do because the current project is not their first rodeo. We've been bucked around many times but always hang on when things get tough. We are in this work for the long haul.

Early in our Capital Campaign effort a friend and advisor suggested that we may not be able to raise the money needed. While we have many supporters, we had never raised 2 million dollars in philanthropy. Those comments gave us pause and honestly stung a little. But, we persevered. In 2019 we celebrated the ground breaking of our expanded Service Center! We have yet to raise all the money. We do have a gap and we will continue to fundraise. With your

help we can grow the number of people and organizations contributing to our capital campaign so we borrow less.

And finally, there is the story on page 6 where we share the experiences and strengths of Alex. He perseveres against the tide of obstacles: "He had just moved into his first apartment and was not at all confident that it would work out. But we knew what he didn't know yet – that we stand in his corner for the long road."

Thank you for standing in our corner whether it has been for decades, years, or months.

Together We Persevere.



Roger G. Auer,
President, OTRCH
Board of Trustees



Mary Burke Rivers
Executive Director

P.S. - As we prepare this annual report to go to print we are in the midst of the COVID 19 Pandemic. We have yet to experience the full force of the health and economic impacts on our residents living in our housing and on our organization as a whole. Our hope is that we move thoughtfully through the concerns and act compassionately with every decision while also supporting our dedicated staff in this stressful time. In the coming months the effect will be more widely understood. As our residents are unable to pay rents due to loss of employment or living with a stressed budget, we will assure that they still have a home with us. We will not evict. We will seek out all resources available to help us keep our operations going including paying our dedicated staff. If you are looking for ways to help, let us know. We know the loss of rental income will leave a significant hole in our budget. Your contributions will help us immensely. Remarkably, the theme of our 2019 Annual Report prevails – **TOGETHER WE WILL PERSEVERE.**

BEYOND THE BUILDING

On September 12th with joy and gratitude in our hearts we celebrated the ground breaking on our Service Center Renovation and Expansion!

We had reached capacity at our 114 W. 14th St. home. The renovation and expansion will provide an ADA accessible entrance, elevator access to the entire building, and the space we need to grow and serve residents with dignity.

A huge thank you to our supporters, some of whom are seen here in this photo, and the very many of you who gave gifts to make this possible.

We still need your help! We have yet to reach our goal. We're proud to share that we've raised over \$1 million dollars! We are \$650,000 away from achieving our target. We feel confident that we will meet our goal with your generosity. If you haven't already supported this capital campaign effort, you can do so by visiting this link <https://otrch.org/support-beyond-the-building/>. Naming rights are still available.



“We run on “stubborn hope” here – the defiant resistance against suffering and the relentless insistence that a positive outcome is possible.”

-Lauren Stoll, OTRCH Social Worker



HOUSING NOW MARCH

On October 2nd OTRCH joined hundreds of Cincinnatians as we marched for a dedicated and meaningful funding source for the Cincinnati Housing Trust Fund. Advocates from across the country, including many Cincinnatians, marched on Washington in 1989. While we were energized by the 2019 march, we also experienced some just anger with how little progress has been made in 30 years since that march in Washington.

Cincinnati is experiencing a serious shortage of affordable housing. Over 28,770 families pay more than they can afford for a stable home. This has forced thousands of families with children, working adults, and seniors into the trauma of homelessness.

The Affordable Housing Trust Fund will allocate at least \$50 million every year to provide homes for families with incomes less than \$29,890. At least half of the funds will provide homes for families who earn \$14,700 or less. The money will be used to renovate outdated housing stock, build new developments, and fund direct services like homeless prevention and homeowner repairs.

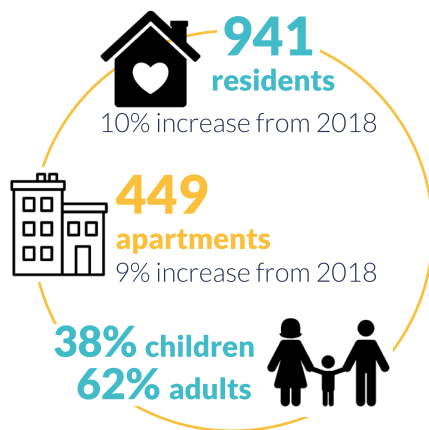
The three organizations leading the campaign for the trust fund are Greater Cincinnati Homeless Coalition, Affordable Housing Advocates, and Metropolitan Area Religious Coalition of Cincinnati. This group is working to get a charter amendment on the ballot for the November 2020 election. They plan to collect thousands of signatures and build awareness of the Affordable Housing Trust Fund. To get involved email Amanda Lynn Barker at amandabarker@cincihomeless.org.

AFFORDABLE HOUSING DEVELOPMENT

Carries Place and Morgan Apartments

We are happy to share that these two projects were completed in 2019! You've probably heard of these projects over the years. Carries Place provides 43 units and Morgan Apartments provides 48 units. 22 of the Carries Place units are set aside for families and individuals who have experienced homelessness. We hope that that residents feel the positive energy of Carrie Johnson and Tony Morgan (for whom the projects were named) smiling down on them as they settle into their new homes.

In 2019, we provided affordable housing for



821 Flats, a partnership with Tender Mercies, created 57 units of permanent supportive housing for people who are experiencing homelessness and have a mental illness. The property was completed at the end of 2019. Tender Mercies owns and provides support and property management. OTRCH is proud to have served as the co-developer and to have brought our extensive experience with Low Income Housing Tax Credit finance to further the mission and meaningful work of Tender Mercies. Other partners include the City of Cincinnati, Hamilton County, the Ohio Housing Finance Agency, the Federal Home Loan Bank of Cincinnati, River Hills Bank, and Ohio Capital Corporation for Housing, Cincinnati Development Fund, and the

Ohio Mental Health and Addiction Services, Architect Jeff Raser with CUDA Studios, and General Contractor Turnbull Wahlert.



821 Flats Ribbon Cutting celebrated on 01/22/2020

Perseverance, a partnership with 3CDC, will renovate 6 units of affordable housing and create 26 new units in the 1500 block of Vine St. OTRCH was successful in securing an allocation of Low-Income Housing Tax Credits (LIHCT) for the project in 2019! Additional funding for the residential project includes: Federal and State Historic Tax Credits, HOME funding from the City of Cincinnati and the Ohio Housing Finance Agency, and construction financing from Fifth Third. 3CDC is developing the first-floor commercial spaces using New Market Tax Credits and will own and manage the commercial spaces. OTRCH will own and manage the residential portion of the project. The first units are expected to be available in early 2021. Stay tuned!



1507-1511 before and after

LPH Thrives, OTRCH is very excited to partner with Community Matters, a long-time community-based organization in Lower Price Hill, to bring our affordable housing model to their neighborhood. In 2019 we applied for an allocation of tax credits for a 56-unit development. While our application wasn't successful the first time around, our team is not deterred and we look forward to securing funding in 2020. There are so many positive things happening in Lower Price Hill that we are excited to support!

THE IMPORTANCE OF COMMUNITY

In 2019, OTRCH celebrated 25 years with Andy Hutzel, our director of Resident Services. In his time in the neighborhood, Andy has come to realize how the importance of community stretches equally as far into the organization as out into the Over-the-Rhine community. He reflected on his work with us recently, saying:

"OTRCH staff are some of the most empathetic and committed social service professionals. The dignity and respect they demonstrate each day for their residents is so comforting. They live the principle that all people deserve a safe, decent place to call home. Our community is fortunate to have these individuals working on behalf of those living on our streets and in our shelters."



ASSET MANAGEMENT UPDATE

We are grateful to the City of Cincinnati, Key Bank, Bank of America, and PNC Bank for their support of our capital improvement efforts. Like us, they value the preservation of affordable housing. As our buildings age they require repairs to roofs, HVAC systems, interior finishes and exterior finishes. Not every building undergoes a full rehab as the Carries Place and Morgan Apartments units did, some were rehabbed over 20 years ago.

The importance of these grants goes beyond the physical improvement of our buildings. These grants allow us to maintain affordable rents for our residents, many of whom work important jobs but aren't paid a wage that is sufficient to secure decent affordable housing.

We are very excited to share that we have added an Asset Manager to OTRCH's staff and expect 2020 to be a very productive year for capital repairs.

Over-the-Rhine Community Housing operates nine supportive housing programs for formerly homeless individuals and families. We utilize a range of models, from recovery-oriented to "housing first."

352 individuals were served through Permanent Supportive Housing in 2019



318
adults

35
children



86%
exited PSH to other permanent destinations

4 years
average length of stay



56%
from the streets
44%
from the shelter

55%
were chronically homeless



57%
have achieved income

REACHING ACROSS BARRIERS FOR 10 YEARS AT JIMMY HEATH HOUSE

Jimmy Heath House (JHH) will celebrate its 10-year Anniversary in November 2020. From the beginning, students from various schools have come to learn from the lived experience of residents and to provide volunteer services as a way of exploring their own understanding of social justice, community engagement, and self-discovery. The first group was Labre, from Xavier University. Labre had been doing street outreach to the many camps that were part of the downtown landscape before JHH existed and followed people they knew right into our new program. The relationship between JHH and Labre flowered into a relationship with Xavier University's X-Change groups, who have served meals and provided social engagement to JHH residents since. In 2019 X-Change students came twice a week to prepare a meal and spend time with residents.

In 2014 JHH became a "Service Learning" site for the University of Cincinnati Medical

School's "Physicians and Society" class. Each year there are approximately 12 1st year medical students sent to learn about JHH, OTRCH, and to get a better understanding of the "Social Determinants of Health" that inform the lives and health outcomes of JHH residents, and the OTR community. In 2019 the Physicians and Society students were instrumental in helping to establish a site for Cincinnati Public Health's Syringe Exchange Van in OTR. Plans for 2020 include students providing trainings to JHH residents on such topics as Reproductive Health, Nutrition and Diet, Simple Wound Care, and living with serious mental illness.

JHH has also provided an individual learning environment for intern/practicum students from the University of Cincinnati, Miami University, and Northern Kentucky University.

High school engagement includes the Elder Freshman Boosters bringing students and their parents to JHH to serve weekend lunches. The Elder's Fathers and Sons group engages clients with lunchtime meals. Students from Purcell-Marian have provided meals and done clothing drives for JHH residents. Students from Walnut Hills high school have also been active at JHH every Christmas.



David Elkins, Julie Martin Service Provider of the Year award recipient, and OTRCH staff members at the annual Homeless Coalition Awards dinner

We are proud that the JHH community has become a place where students can find purposeful engagement and growth. We know that JHH residents look forward to student visits and often engage in the preparation and service of meals. We hope that both students and residents learn from these opportunities to reach across the barriers of class, education, and privilege, among others, to find the commonalities.

THE LONG ROAD HOME

Success comes in many different forms in the Resident Services department at Over-the-Rhine Community Housing. Sometimes success looks like a resident getting their GED, a family finding housing from homelessness, or a child graduating from high school. But there is another success story that we often don't have a chance to share. One version of success that doesn't necessarily garner applause or recognition is long road success.

A good example is Alex, a 50-year-old resident of OTRCH for 3 years, the longest in his life he has maintained any place of his own.

This is partially because Alex has faced a lifetime of barriers and obstacles. The lasting effects of childhood trauma laid the groundwork for his difficult life. As an adult, Alex was diagnosed with several severe mental health disorders. Alex turned to substance use to self-medicate and cope with unbearable symptoms and lifelong trauma.

Living with these disabilities lead to short and long term stays in various residential facilities as well as incarceration. Between these incidents, Alex lived outside or in shelters. He lived both in Washington Park and at the Drop Inn Center and has fond memories of buddy gray looking out for him.

When Alex first engaged with a social worker at OTRCH, he was incredibly vulnerable. He had just moved into his first apartment and was not at all confident that it would work out. But we knew what he didn't know yet – that we stand in his corner for the long road. Alex had become used to his many case-workers of his past never lasting long. In fact, roughly two weeks after his first meeting with his social worker at OTRCH, Alex came into the office to ask if she still worked there.

Part of what OTRCH does is walk the path with folks for as long as they need. On good days, we're here to celebrate and cheer on the sidelines. On worse days, we're here to problem-solve, encourage, and support. Unfortunately, some of our residents are dealt an unfair hand – because of their



Our Mission

We develop and manage resident centered affordable housing to build inclusive community and benefit low income residents.



Our Vision

Quality stable housing for all in a socially racially and economically inclusive community.



Our Values

- Housing is a right and should be available to all.
- All people deserve dignified housing.
- Housing must include the most vulnerable members of our community.
- All relationships must be shaped by justice, community, and inclusion.
- Neighborhood amenities and services are available for all members of our diverse community.
- All persons are respected and valued.

OTRCH provides supportive Resident Services to help residents achieve stability and thrive in their housing.



32 women

participated in Women of Over-the-Rhine, our peer-to-peer support group



105 children

attended Children's Creative Corner, our after school art program that provides a positive, creative outlet



30 children

attended YMCA's Camp Ernst



65 residents

reduced utility costs by enrolling in the Percentage of Income Payment Plan

circumstances, their “starting line” in life is far behind the rest. Life is a long road of many good and bad days, and we know that being successful in housing sometimes means having someone who stands by you every single one of those days, maybe even for years.

Since the first meeting, three years ago, Alex has had regular weekly engagement with his social worker. They work on things like finances, employment, his mental and physical health, his substance use, and facing his barriers head on. They work on building confidence and finding continued stability for Alex. Most importantly, he is still housed today.

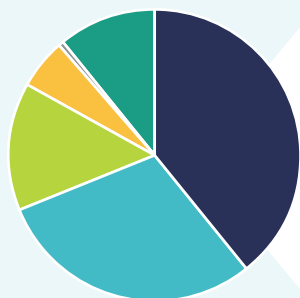
Success here is often an ever-evolving, day-by-day, long road type of success. It is the work and the journey of a lifetime, and at OTRCH we are grateful witnesses to the lives and stories of our residents, some of whom

need an everyday cheerleader, advocate, challenger, and navigator. We run on “stubborn hope” here – the defiant resistance against suffering and the relentless insistence that a positive outcome is possible.



2019 FINANCIAL SUMMARY

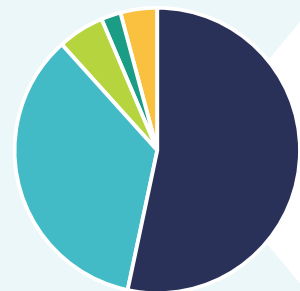
INCOME



■ Rental Income	■ Fees Earned
■ Supportive Housing	■ Miscellaneous
■ Fundraising & Grants	■ Other Gains & Losses
Rental Income _____	\$2,208,734
Supportive Housing _____	\$1,660,756
Fundraising & Grants _____	\$802,205
Fees Earned _____	\$300,469
Miscellaneous _____	\$37,605
Other Gains & Losses _____	\$600,815
INCOME _____	\$5,610,584

*Based on unaudited numbers

EXPENSES



■ Property Management	■ Fundraising
■ Resident Services	■ Housing Development
■ Management Services	
Property Management _____	\$3,154,726
Resident Services _____	\$1,737,899
Management Services _____	\$243,637
Fundraising _____	\$171,841
Housing Development _____	\$232,489
EXPENSES _____	\$5,540,592
NET ASSETS _____	\$14,118,139

STAFF

ADMINISTRATION

Mary Burke Rivers - Executive Director
Ty Black - Finance Director
Lisa Cecil - Controller
Patrice Smoot - Accounts Payable Analyst
Sean Guilfoile - Director of Operations

PROPERTY MANAGEMENT & MAINTENANCE

Tanya Murphy - Director of Property Management
DaKenya Gunn - Compliance Manager
Cynthia Talbert - Property Manager
Cynthia Bell - Leasing Manager
Tamara Harris - Assistant Leasing Manager
Carol Strayhorn - Front Desk Manager
Thomas Fields - Property Management Administrative Assistant
Jason Gudorf - Asset Manager
Carl Combs - Maintenance Supervisor
Tim Carter - Maintenance
Frank Cook - Maintenance
Paul Sweet - Maintenance
Bobby Taylor - Maintenance
Maurice Wagoner - Maintenance
Monte Barnett - Maintenance
Alphonso Williams - Maintenance
Harper Andrews - Groundskeeper

Emily Stant-Kelly - Children's Creative Corner Coordinator
Angela Merritt - Women of Over-the-Rhine Coordinator
Christine Wooten - Recovery Hotel Program Coordinator
Sherran Harris - Buddy's Place and Nannie Hinkston House Program Coordinator
Lonnie Ausberry - Recovery Hotel Building Monitor
Marvin Hunter - Jimmy Heath House Front Desk Staff
David Elkins - Jimmy Heath House Program Coordinator
Joe Wynn - Jimmy Heath House Front Desk Staff
Raymond Sams - Jimmy Heath House Front Desk Staff
Robin Boles - Jimmy Heath House Front Desk Staff
Robert Bowman - Jimmy Heath House Front Desk Staff
Bonnie Seymore - Jimmy Heath House Front Desk Staff
Michael Gramann - Jimmy Heath House Front Desk Staff

INTERN

Patrick Chavis
Taylor Bridgett

PROPERTY DEVELOPMENT

Ashleigh Finke - Director of Real Estate Development
Ben Eilerman - Project Manager

FUND DEVELOPMENT

Claire Daugherty - Fund Development Director
Emily Stant-Kelly - Special Events and Fund Development Manager
Christy Devine - Fund Development Administrator

RESIDENT SERVICES

Andy Hutzel - Director of Housing Services
Jill Stein - Shelter Plus Care Administrator
Michelle Christopher - Permanent Supportive Housing Case Manager
Markita Coach - Permanent Supportive Housing Case Manager
Amy Silver - Resident Services Coordinator
Lauren Stoll - Resident Services Advocate

2019 BOARD OF TRUSTEES

Roger Auer - President
Georgia Keith - Vice-President
Jonathan Diskin - Treasurer
Bonnie Neumeier - Secretary
Michael Bootes
Bridgette Burbanks
Nicholas DiNardo
Fanni Johnson
Robert Pickford
Allen Woods
Kelly Clements
Valerie Dowell

FRIENDS & SUPPORTERS

UP TO \$99

1215 Wine Bar & Coffee Lab
Alice Altstaetter
Antoinette Asimus
Cynthia Campbell Bell
Judith Blackburn
Tom Borchert
Catherine Brown
Bridgette Burbanks
Daniel Burke
Angie Butler
Renee Carruthers
Stella Chang
Dorothy Christenson
Dale & Dianne Clark
Heather Cole
Charles Cusick & Norah Mock
Keanna Daniels
Claire Daugherty
Partners in Change
Daniel Dell Sr.
James Denker
Eva Dintino
Mary & Dan Drexler
Samuel & Nancy Duran
Linda Fabe
Bruce & Laura Fairlie Weil
Anna Feldmann
Andrea Ferguson
Phyllis Ferrell
Gwendoline Finegan
Ashleigh Finke
Dionna Flowers
Leonard Gaston
Evan Gay & Laura Steinberg
Lawrence & Katie Geiger
William & Louise Gioielli
Cynthia Goslee
Mike & Sandra Governanti
Greene County Community
Foundation
Jeffrey Grothaus
DaKenya Gunn
Chris & Patty Harpenau
Stephen Henderson
Alan Henning
Arnold Hofer
Cincinnati Hills Christian Academy
H. Gerald Hoxby
Hayley Huge
John Joerling & Teresa Clear
David Kirley
Marci Koch
Diane Laake
Matthew Latchaw & Lyric Morris
Marianne Lawrence & Randy Lykins
Marilyn Maag
Rebecca Mansfield
Anne Mercier
Louise Mettler
Thomas Mosler
Marjorie Motch
Anne Mulder
New Jerusalem Community
Marianne Newman
Carolette Norwood
Ann J. Nufer

Chika Okano
James Peters
Pickens Window Service
Sandra & Sequoia Powers-Griffin
Recovery Hotel Support Group
Brewster Rhoads & Ann Lugbill
John & Rebecca Ristau
Johnny Robbins
Kathleen Roosen
Howard Rottinghaus
Bradley Ruwe
Rina Saperstein & Jeff Davis
Christine Schroder
Kevin & Jane Shea
David Siders
Amy Silver
Dorsey Stebbins
Donna Steffen
Joseph & Carol Steger
Martha & Jerone Stephens
Daphney Thomas
Andrea Veintimilla
Margaret Warminski
John & Ann Weigand
James Whittington
Joe Wilmers
Martha Wise
Donald & Karen Wolnik
Brenda Zechmeister

\$100-\$250

Sarah Allan
Janet Allen-Reid
Douglas Appler
Karen Arnet
Kay R. Atkins
Ronald & Chris Auer
Shirley Baldwin
Jackie Baumgartner
Anthony Becker & Susan Wheatley
Robert Bell & Ann Elizabeth
Armstrong
Beyondbeing
Mary Jo & Tom Blankemeyer
Jonathan Blickenstaff & Angela
Denov
Ellen Briggs
Beverly Brubaker
Michael & Marianne Brunner
Ericka Burke
Renee Carruthers
Lisa Cecil
Chloe Collins
Mary Jane Colvin
Ellen Costanzo
Jon Cramer & Jen Walke
Catherine Crichlow
Lynne & James Curtiss
Mary Anne Curtiss
Paul & Linda Davis
Dan Dell
Dede Dennig & Chip Dennig
Dominican Sisters of Hope
Eastern Hills Friends Meeting
Joseph Feldhaus
Kara & Gregg Feltrup
Harry & Nancy Fischer

Joseph Fritz
Gerald Froehlich & Laura Goodell
Steven & Shelley Goldstein
Jeanne Gollmer & Gregory Badger
Michelle Greenfield
Thomas Grogan
Pauletta Hansel
Lorry Hartley
Kevin & Roseann Hassey
Conrad & Carol Haupt
Donald Heeb
Carol & David Holt
Joan Hoxsey
Mark & Nancy Hutzel
Chris Ingalls
Mark Manley & Annette Januzzi Wick
Christina Jenkins
Georgia & Milton Keith
Gina & Matt Keith
Dana Kilcoyne
Vivian Kline
Marci Koch
John & Andrea Kornbluh
Tim Kraus & Lois Gish
Katherine Kremer-Blair
Summit Country Day School
Bea Larsen
John Larson
Sally Larson
Lee Stultz Electric, Inc
Lisa & Steve Lemen
Andrew Lichtenberg
James Lietz
Mary Lucas
Andreas Madsen
Mark Mahoney & Joan Gregorich
Jennifer Malat
David & Elizabeth Mann
Donna & Neal Mayerson
Cheryl Meadows
Ross & Emilie Meyer
Amy & Stu Meyers
Victoria Montavon & James Myers
Todd Myers
Robert & Judith Neal
Donald Nesbitt & Jeanne Kortekamp
Mike Neumeier
Mary Oehler & Gerald Owsley
Jane Orthel
Osterwisch Company
Michael Otting & Stephanie Blount
Gregg Pieples
Michael Privitera & Marcia Kaplan
Pyatok Architects
Damon Ragusa & Holly
Brians-Ragusa
Jeff Raser
Leslie Ritter
David & Mary Rudemiller
John Schrider
Larry & Kathy Schwab
Beth Schwartz
James Scott
Nasrin Shahinpoor
Venice On Vine
Robert Shawver
Brittany Shreiner

Kenneth & Alice Skirtz
Edward Slater
Jeffrey Slayback & Carol Brandt
Curt Sparks
Tom & GERALYN Sparough
Amy Spiller
Oakland University St. John Fisher
Chapel University Parish
Nancy & Gary Strassel
Gerald Stricker II
Stephanie Sweeney
Greg Terhune & Robert Wachendorf
Beverly Thomas
Daniel & Suzanne Thompson
Jordan Toney
Diana Turoff
Larry & Mary Anne Ungerer
Joseph Wessling
David Weybright
Mike & Pat Wilkey
Jeffrey Williams
Tom & Paula Williams
Laurie Wissel
Allen & Kyla Woods
Amy Youngblood Interiors
Patricia Youngblood
Peggy Zink

\$250-\$500

Carl & Morag Adlon
Elizabeth & Prince Brown
Shirley Burke
Caracole
Charities Aid Foundation of America
Melissa Currence
Jonathan Diskin & Diane Stemper
Phil & Cindy DiSorbo
Steve Elliott & Janet Weber
Joseph Feldhaus & Marcheta Gillam
John & Barbara Fillion
Dennis Finney & Laurel Frank
Cathy Fowler
Eric Fryxell
Greater Cincinnati Homeless
Coalition
Nancy Gutman & Ed Gutman
City Studios Architecture
Katy Heins Clifford & Pat Clifford
Shannon Hughes
Jenn Arens
Dan & Karen Hurley
Gina Kern
Jeffrey Kruth
Christine Lottman & Robert Rack
Hannah & James Maloney
Kevin Marshall
Dianna Schweitzer & Sean Mullaney
National Financial Services
Mark & Christina Neumeier
Samuel & Mary Neumeier
David & Laura Rapien
Jennifer Summers & Brennan
Grayson
Nina & Howard Tolley
Frances Turner
Walter Vanderbush
Kenneth & Elizabeth Weartz
Amy Weber
Marcus Wolnitzek

\$500-\$999

Greg Albright
John Benton
John & Megan Statt Blake
Jennifer Cahill
Sarah Corlett & Jason Hampton
Janis L. Dutton
Lindsay Farrell
Nancy Fecher
Metropolitan Area Religious Coalition
of Cincinnati
Greg Friedmann
Don & Mary Jane Gardner
John Getz
Jo Anne Gibbons
Francis Gudorf & Christine Gudorf
Mindy Hammer
Gregory & Kathleen Harmeyer
David Harpenau
Judy Hertel
Jill & Jim Hider
Patricia Hord
Andy Hutzel & Amy Harpenau
John Hueber Homes
Sarah & Scott Kiley
Scott Knox
Robert Kneueven
Dawn Larson
Legal Aid Society of Greater
Cincinnati Sabry & Anne Glynn
Mackoul
Barbara Maloney
Christopher Mathers
Daniel & Tanya Murphy
Catharine & Joseph Pflum
Robert Pickford & Linda Harig
Mary Pierce-Brosmer
Barbara Poppe & Bill Faith
Margaret Quinn
Sanyog Rathod
Mary Clare Rietz & Michael Marcotte
Christine & Robert Scheadler
Phyllis Slusher
Mike Stehlin
Dick Waller & Ann Meyers
Kim Wehmeier
Alexandra Yoon

\$1,000-2,499

Ron Applegate
Rose Batt
Roger & Mary Glynn Auer
BB&T
Roger & Janice Brown
Robert & Victoria Cianciolo
David Cramer
Ruth Crystal
Creative Housing Solutions
Angie Denov & Jon Blickenstaff
Robert Donovan
Elder High School
Brian & Cathleen Fagan
First Financial Bank, Community
Development
Franciscan Friars - Province of St.
John the Baptist Fr.
John Gardner & Kathy Woeber
Gardner

Impact Services
Fannie Johnson
William & Suzanne Joiner Family
Fund of Christopher Ledwin
Srs. Monica McGloin & Janet Linz
Miami University Center for
Community Engagement
Model Group
Parkway Pizza, Inc.
New Republic Architecture
Barbara & Butch Otting
Platte Architecture & Design
Brenden Regan
Nancy Richardson & Elaine Huber
Leonard & Mary Burke Rivers
Mary Ann Roncker
James Rubenstein & Bernadette
Unger
Sisters of Charity of Cincinnati
Gerald & Therese Stricker
The Marianist Province of the
United States
Tidwell Group
John & Eunice Timoney Ravenna
Union Savings Bank

\$2,500-\$4,999

Cincinnati Center City Development
Corporation
William & Maureen Coleman
Parking Lot Management of
Cincinnati
Jim & Peggy Flood
General Electric Evendale Plant
Employees Community
Service Fund
Ira Block Foundation Peter Block
Bonnie Neumeier & Michael Flood
RiverHills Bank
William & Roberta Lotreck Silver
Turnbull-Wahlert Construction, Inc.
Leonard Webb & Diana Porter

\$5,000-\$9,999

ArtsWave
Patricia Hord
Jeff Thomas Catering
Steve Kline
Anonymous

\$10,000-\$500,000

Bank of America Foundation
Key Bank
Manuel & Rhoda Mayerson Family
Foundation
Ohio Capital Corporation for Housing
PNC Bank, Community Development
Robert H. Reakirt Foundation, PNC
Bank Trustee
Rosenthal Family Foundation
Scripps Howard Foundation
The Carol Ann & Ralph V. Haile,
Jr./U.S. Bank Foundation
U.S. Bank, Community Affairs
Zillow Group





1227 Vine Street
Cincinnati, OH 45202
513-381-1171 • www.otrch.org

NON PROFIT ORG
U.S. POSTAGE
PAID
CINCINNATI, OH
PERMIT No. 4652